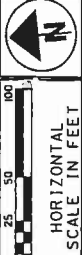


**REPLAT OF
OPEN AREA 1,
OPEN AREA 3,
AND
OPEN AREA 4
MASON FIELDS**

AS RECORDED IN
PLAT BOOK 51, PAGE 20
REPLATED AS
OPEN AREA 1A,
OPEN AREA 3A,
AND
OPEN AREA 4A,
SECTION 29, TOWN 4E, RANGE 2N
CITY OF MASON
WARREN COUNTY, OHIO



**REPLAT OF OPEN AREA 1, OPEN AREA 3,
AND OPEN AREA 4, MASON FIELDS**

LEGEND

- P.K.F. PK NAIL FOUND
- P.K.S. PK NAIL SET
- IRON PIN FOUND
- IRON PIN SET
- CITY OF MASON EASEMENT (STORM, SANITARY, AND WATER)
- PRIVATE DRAINAGE EASEMENT
- PUBLIC UTILITY EASEMENT
- R/W DEDICATION 0.164 ACRES, OPEN AREA 3 DEDICATED TO THE PUBLIC
- R/W DEDICATION 0.054 ACRES, OPEN AREA 1 DEDICATED TO THE PUBLIC

EXHIBIT

A

NOTE: EXISTING SETBACKS AND EASEMENTS SHOWN ARE FROM ORIGINAL MASON FIELDS PLAT P.B. 51, PG. 20

REV	DATE	DESCRIPTION

COMPLETION DATE:

RIGHT OF WAY CURVE DATA

CURVE	RADIUS	ARC LENGTH	CHORD LENGTH	CHORD BEARING
C-1	15.00'	23.56'	21.21'	S 48° 41' 43" W
C-1A	15.00'	4.06'	4.05'	S 11° 27' 08" W
C-1B	15.00'	19.50'	18.16'	S 56° 27' 08" W
C-2	15.00'	23.56'	21.21'	S 41° 18' 45" E
C-2A	15.00'	3.92'	3.91'	N 3° 48' 01" W
C-2B	15.00'	19.64'	18.27'	N 48° 47' 33" W
C-3	35.00'	5.95'	5.95'	S 1° 11' 34" E
C-4	7.50'	23.56'	15.00'	N 86° 18' 16" W
C-5	7.50'	23.56'	15.00'	S 86° 18' 16" E



VICINITY MAP
NO SCALE

AREA SUMMARY

OPEN AREA 1A = 1.540 ACRES
DEDICATED R/W = 0.054 ACRE
OPEN AREA 1 = 1.594 ACRES

OPEN AREA 3A = 0.393 ACRE
DEDICATED R/W = 0.164 ACRE
OPEN AREA 3 = 0.557 ACRE

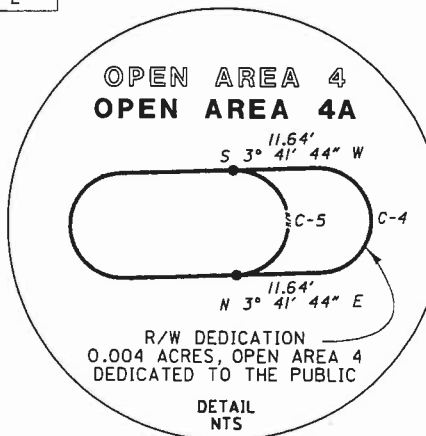
OPEN AREA 4A = 0.010 ACRE
DEDICATED R/W = 0.004 ACRE
OPEN AREA 4 = 0.014 ACRE

SIDWELL NUMBERS:

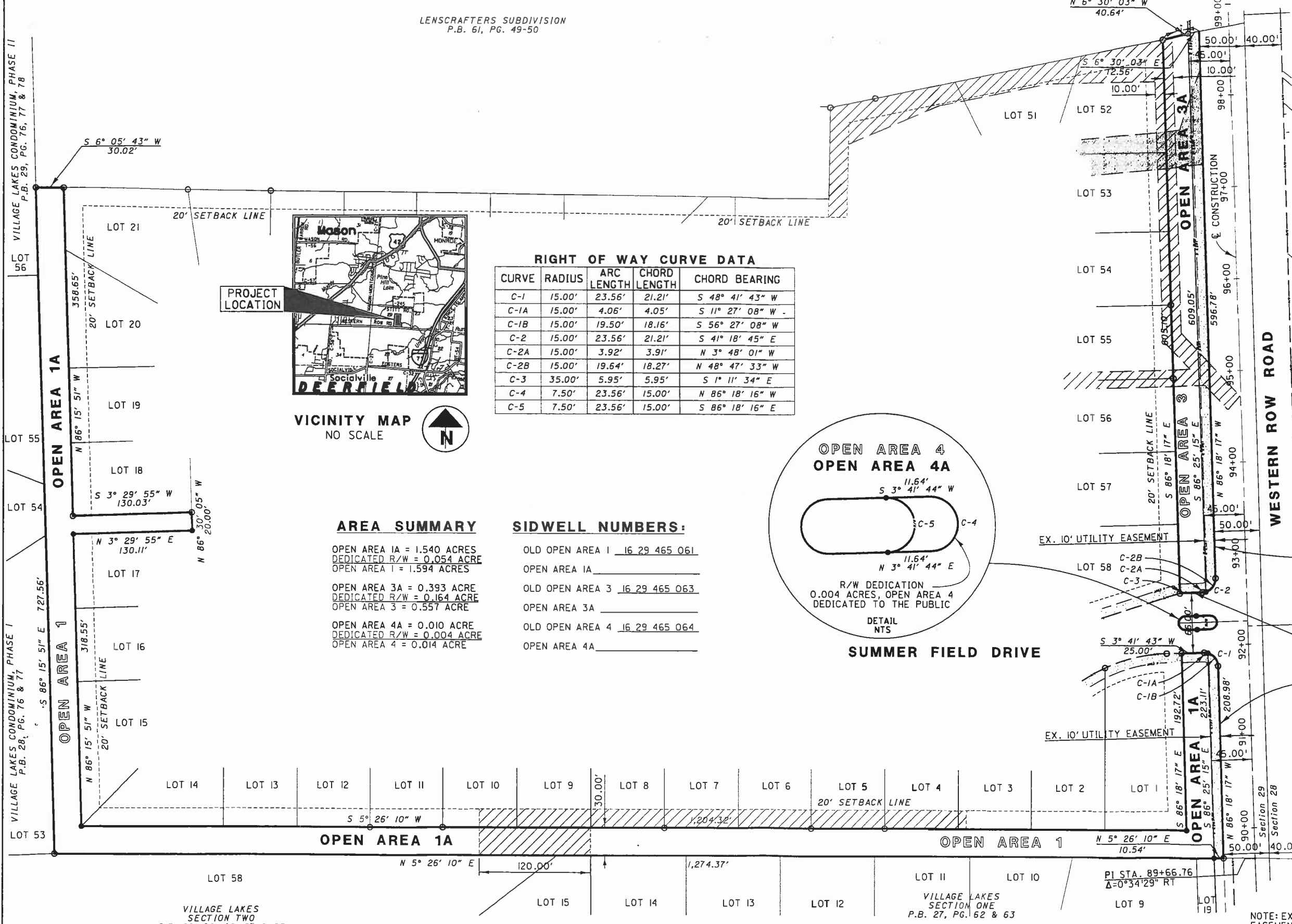
OLD OPEN AREA 1 16 29 465 061
OPEN AREA 1A _____

OLD OPEN AREA 3 16 29 465 063
OPEN AREA 3A _____

OLD OPEN AREA 4 16 29 465 064
OPEN AREA 4A _____



SUMMER FIELD DRIVE



VILLAGE LAKES CONDOMINIUM, PHASE II
P.B. 29, PG. 76, 77 & 78

VILLAGE LAKES CONDOMINIUM, PHASE I
P.B. 28, PG. 76 & 77

VILLAGE LAKES SECTION TWO
P.B. 28, PG. 26, 27 & 28

VILLAGE LAKES SECTION ONE
P.B. 27, PG. 62 & 63

LDR Inc. - 1100 Research Blvd., P.O. Box 20244
Dayton, OH 45420-0244
(937) 233-0000 ext. (937) 233-5100 fax. (937) 233-5100

