

**NOTES:**

1. SOURCE DOCUMENTS AS NOTED.
2. OCCUPATION IN GENERAL FITS SURVEY.
3. ALL MONUMENTATION IS IN GOOD CONDITION UNLESS NOTED OTHERWISE.
4. HORIZONTAL DATUM IS BASED ON THE OHIO STATE PLANE COORDINATE SYSTEM (OSPC), SOUTH ZONE AS DERIVED FROM THE OHIO DEPARTMENT OF TRANSPORTATION'S VIRTUAL REFERENCE STATIONING SYSTEM. THE PROJECT COORDINATES ARE BASED ON OSPC AND HAVE BEEN SCALED TO GROUND BY USING A PROJECT ADJUSTMENT FACTOR OF 1.0001041180 APPLIED AT A BASE POINT OF N:487363.726 E:1462051.898. GRID AND GROUND COORDINATES ARE IDENTICAL AT THE BASE POINT.

16-22-300-036  
 PT. LOT 6  
 KINGS ISLAND TECHNICAL CENTER  
 BLOCK "B"  
 P.B. 18 PG 1  
 PARCEL ONE  
 INTELLIGRATED HEADQUARTERS, LLC  
 O.R. 5505 PG 562  
 3.708 AC. (REMAINDER)  
 VOL. 108 PG 4

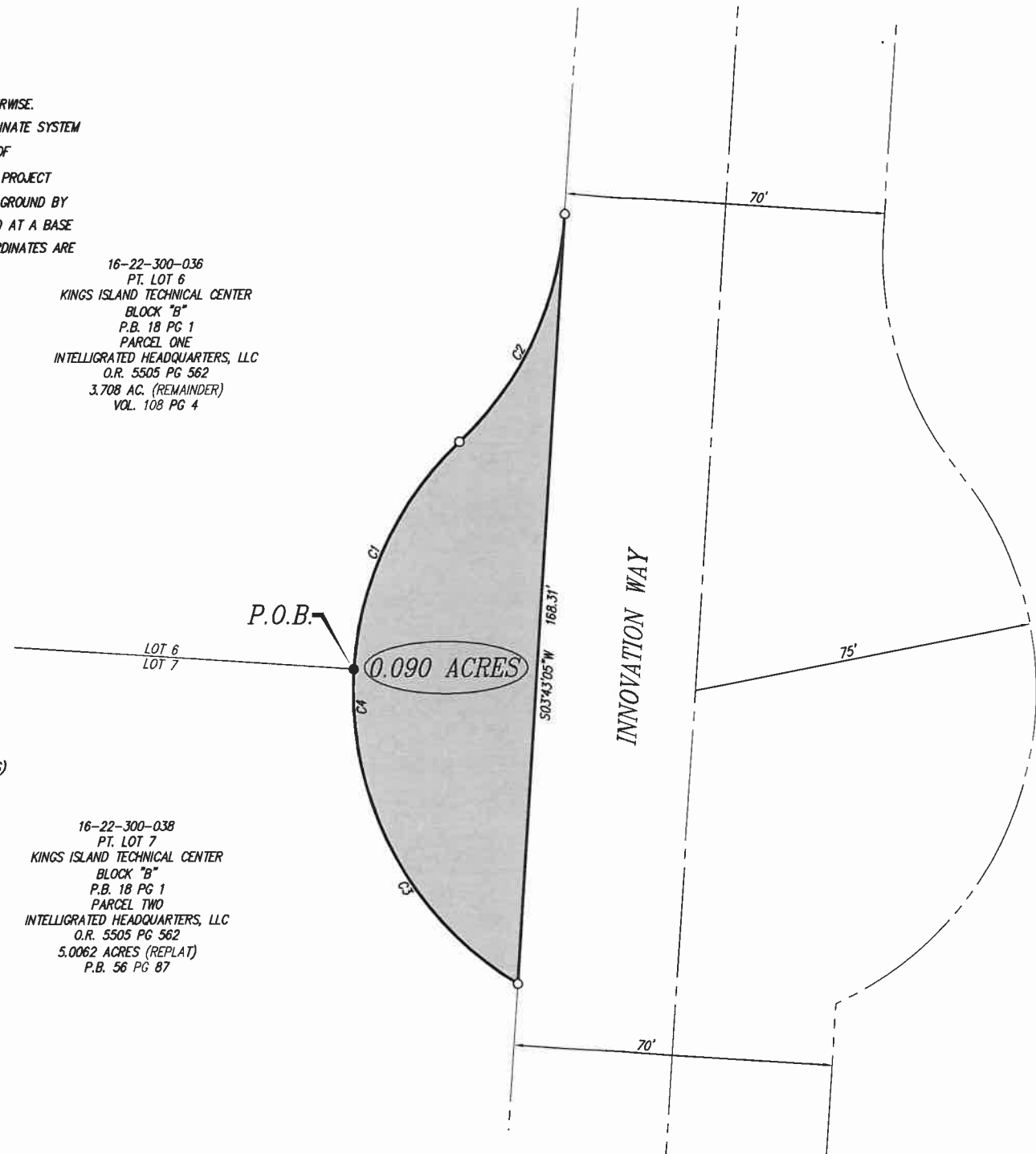
16-22-300-038  
 PT. LOT 7  
 KINGS ISLAND TECHNICAL CENTER  
 BLOCK "B"  
 P.B. 18 PG 1  
 PARCEL TWO  
 INTELLIGRATED HEADQUARTERS, LLC  
 O.R. 5505 PG 562  
 5.0062 ACRES (REPLAT)  
 P.B. 56 PG 87



**LEGEND**

- SET 3/8" IRON PIN
- FOUND 3/8" IRON PIN (KLEINGERS)
- ▭ AREA TO BE VACATED

CURVE TABLE					
CURVE	RADIUS	LENGTH	DELTA	DIRECTION	CHORD
C1	75.00	56.07	42°50'15"	N25°07'58"E	54.77
C2	75.00	56.07	42°50'00"	N25°08'05"E	54.77
C3	75.00	81.39	62°10'40"	N27°22'29"W	77.46
C4	75.00	137.46	105°00'55"	N05°57'22"W	119.02



**RIGHT OF WAY VACATION PETITION:**

WE THE UNDERSIGNED REQUEST THE PLANNING COMMISSION AND CITY COUNCIL OF THE CITY OF MASON TO VACATE A PORTION OF THE RIGHT OF WAY FOR INNOVATION WAY AS SHOWN ON THIS PLAT FOR THE FOLLOWING REASON:

ORIGINALLY THIS AREA WAS A CUL-DE-SAC AT THE TERMINUS OF INNOVATION WAY. SINCE ORIGINALLY DEDICATED, INNOVATION WAY IS NOW A DEDICATED STREET TO SOCIALVILLE FOSTER ROAD. PORTIONS AROUND THIS ORIGINAL CUL-DE-SAC NO LONGER MEET THE NEEDS/REQUIREMENTS OF THE CITY.

PRINTED NAME: \_\_\_\_\_ SIGNATURE \_\_\_\_\_ DATE \_\_\_\_\_ REPRESENTING \_\_\_\_\_

**CITY OF MASON PLANNING COMMISSION**

THIS PLAT WAS APPROVED BY THE CITY OF MASON PLANNING COMMISSION ON THIS \_\_\_\_ DAY OF \_\_\_\_\_, 2012.

PLANNING CHAIRMAN \_\_\_\_\_

**CITY COUNCIL OF MASON OHIO**

WE HEREBY APPROVE THIS PLAT BY ORDINANCE NUMBER \_\_\_\_\_, PASSED BY THE CITY OF MASON COUNCIL ON THIS \_\_\_\_ DAY OF \_\_\_\_\_, 2012.

MAYOR \_\_\_\_\_

CLERK \_\_\_\_\_

**CITY OF MASON ENGINEER**

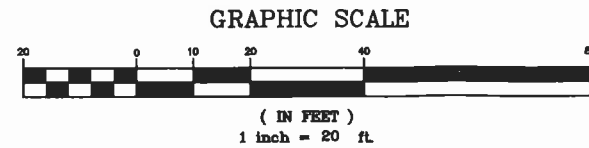
I HEREBY APPROVE THIS PLAT ON THIS \_\_\_\_ DAY OF \_\_\_\_\_, 2012.

CITY OF MASON ENGINEER \_\_\_\_\_

EXHIBIT A  
 PAGE 1 OF 1

I HEREBY CERTIFY THAT THIS PLAT IS BASED ON A FIELD SURVEY MADE UNDER MY DIRECTION.

RANDY C. WOLFE, P.S. \_\_\_\_\_ DATE \_\_\_\_\_  
 OHIO PROFESSIONAL SURVEYOR NO. 8033



REVISIONS


VACATION PLAT  
 OF A PORTION OF INNOVATION WAY  
 0.090 ACRES  
 SECTION 22, TOWN 4, RANGE 2  
 CITY OF MASON  
 WARREN COUNTY, OHIO  
 FOR: INTELLIGRATED

SCALE: 1"=20'  
 DATE: 4/24/2012  
 DRAWN: MDH  
 DESIGNED:  
 CHECKED: RCW  
 JOB NO.: 110554VA003

Page  
1  
 of  
1



ELECTRONIC DATA FILES HAVE BEEN USED BY KLEINGERS & ASSOCIATES INC. FOR THE SOLE PURPOSE OF GENERATING THIS PLAN DRAWING. THE APPROVED PLAN DRAWING REPRESENTS ACTUAL DESIGN INTENT IN CASE OF DISCREPANCIES BETWEEN ELECTRONIC DATA FILES AND THE APPROVED PLAN DRAWING. KLEINGERS & ASSOCIATES INC. ASSUMES NO RESPONSIBILITY FOR ANY USE OR MANIPULATION OF ELECTRONIC DATA FILES BY OTHERS TO GENERATE BID PROPOSALS, PREPARE ESTIMATES, PERFORM CONSTRUCTION LAYOUTS OR ANY OTHER USE. THE USE OR REUSE OF ELECTRONIC DATA FILES IS AT THE USER'S RISK AND FULL LEGAL RESPONSIBILITY.

H:\Engineering\2011-2012\110554\DWG\003\110554VA003.dwg, Layout1, 5/11/2012 2:47:41 PM, randyw