

CONCORD CROSSING HOMEOWNERS' ASSOCIATION - STORM SEWER EASEMENT



LEGEND

Parcel Lines

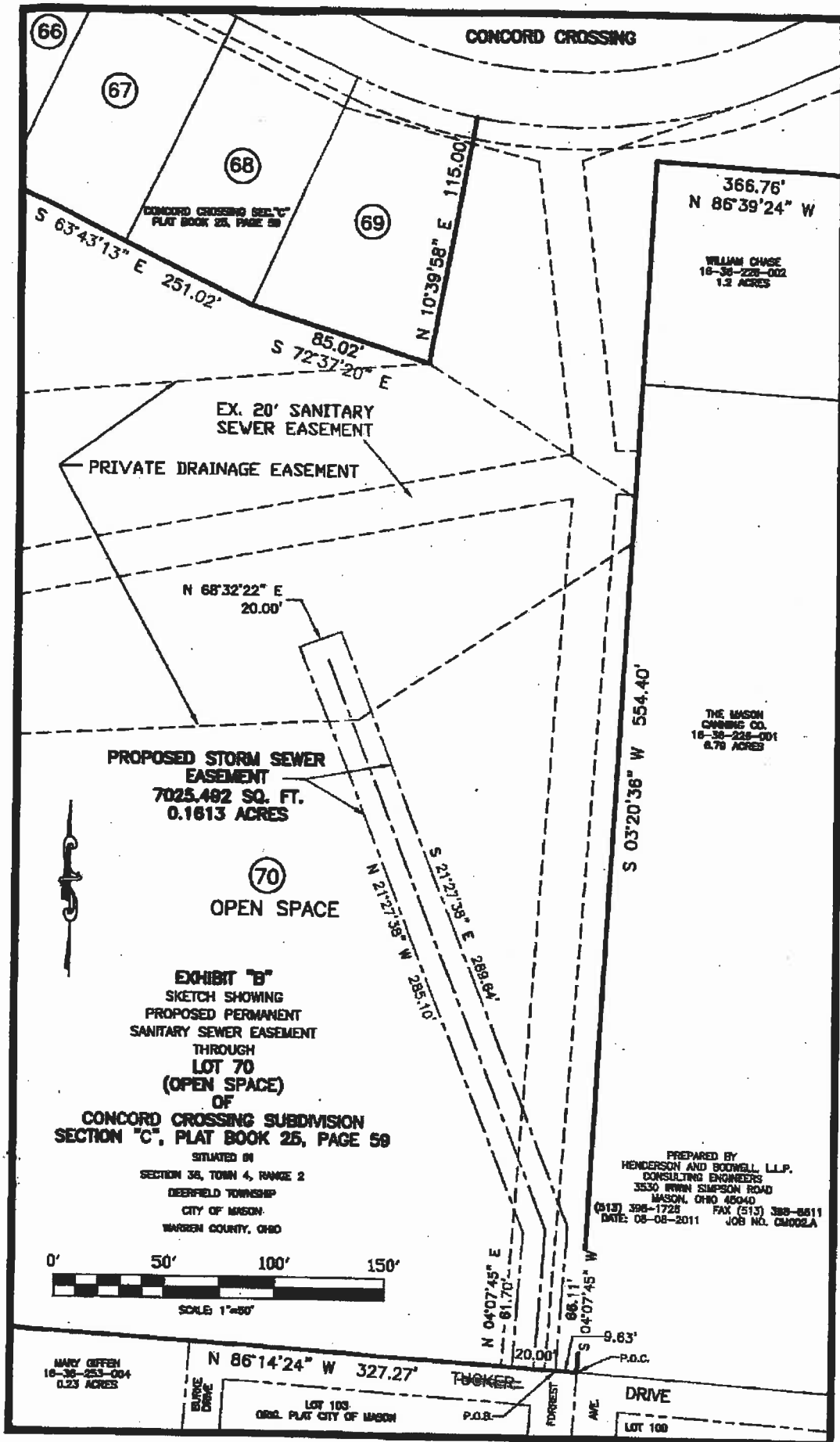
Proposed Storm Sewer Easement

SCALE
1" = 150'



City of Mason
Engineering, Building &
Planning Department





CONCORD CROSSING

66

67

68

69

CONCORD CROSSING (SEE "C"
PLAT BOOK 25, PAGE 59)

S 63°43'13" E 251.02'

N 10°39'58" E 115.00'

85.02'
S 72°37'20" E

366.76'
N 86°39'24" W

WILLIAM CHASE
16-36-228-002
1.2 ACRES

EX. 20' SANITARY
SEWER EASEMENT

PRIVATE DRAINAGE EASEMENT

N 68°32'22" E
20.00'

PROPOSED STORM SEWER
EASEMENT
7025.482 SQ. FT.
0.1613 ACRES

70

OPEN SPACE

N 21°27'35" W 285.10'
S 21°27'35" E 289.64'

S 03°20'36" W 554.40'

THE MASON
CHASING CO.
16-36-228-001
6.78 ACRES

EXHIBIT "B"
SKETCH SHOWING
PROPOSED PERMANENT
SANITARY SEWER EASEMENT
THROUGH
LOT 70
(OPEN SPACE)
OF
CONCORD CROSSING SUBDIVISION
SECTION "C", PLAT BOOK 25, PAGE 59

SITUATED IN
SECTION 36, TOWN 4, RANGE 2
DEERFIELD TOWNSHIP
CITY OF MASON
WARREN COUNTY, OHIO

PREPARED BY
HENDERSON AND BOWWELL, L.L.P.
CONSULTING ENGINEERS
3530 IRWIN SHERMAN ROAD
MASON, OHIO 45040
(513) 398-1728 FAX (513) 398-8611
DATE: 08-08-2011 JOB NO. 08002A



MARY GIFFEN
16-36-253-004
0.23 ACRES

N 86°14'24" W 327.27'

DAVE
DRIVE

LOT 103
ORG. PLAT CITY OF MASON

TUCKER

P.O.B.

FORREST

AVE

DRIVE

LOT 100

N 04°07'45" E 81.70'
86.11'
S 04°07'45" W 9.83'

20.00'

P.O.C.